

Motivic Transformations

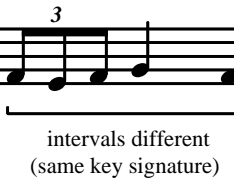
The Motive



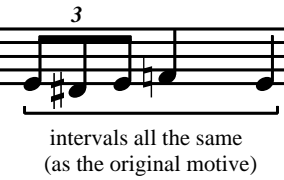
Repetition



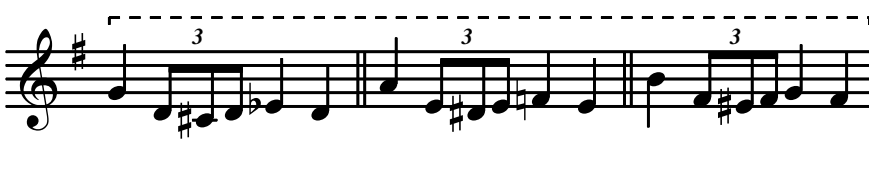
Transposition (tonal)



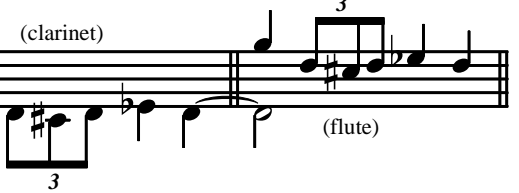
Transposition (real)



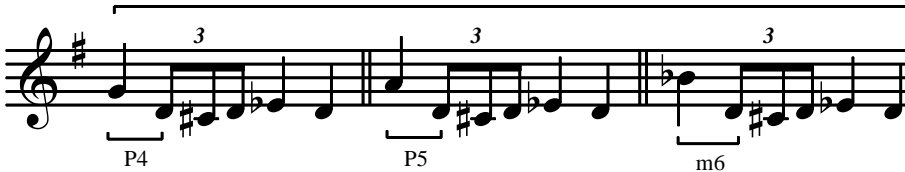
Sequence (a series of transpositions)



Imitation



Intervallic Expansion



Expansion



Contraction



Inversion



Retrograde



(also retrograde)

Retrograde Inversion



Rhythmic motive



Fragmentation



Insertion



Deletion



Augmentation



Diminution



(extension)

Abbreviations for analysis:

Repetition = rep. Transposition = trans. Imitation = imit. Intervallic Expansion = exp. Intervallic Contraction = contr.
 Inversion = inv. Retrograde = retro. Rhythmic motive = rhythm Fragmentation = frag. Insertion = ins. Deletion = del.
 Augmentation = aug. Diminution = dim. Extension = ext.